



BUCKET & BLADE PROTECTION

Wear Protection Products for Buckets & Blades

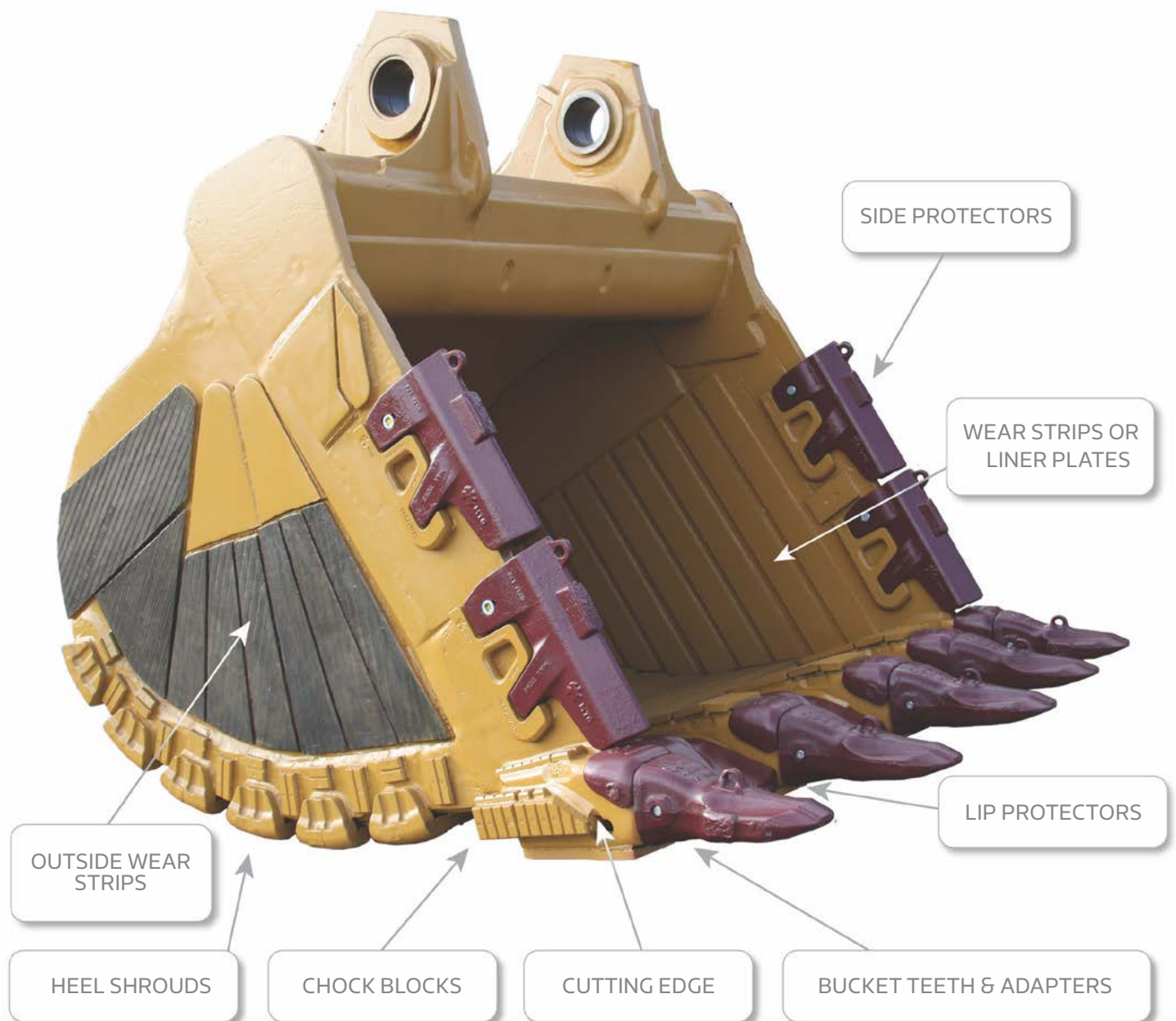


West-Trak®
UNRIVALLED STRENGTH

0800 654 323 | www.west-trak.co.nz

WEAR PROTECTION RANGE

G.E.T better Bucket wear performance

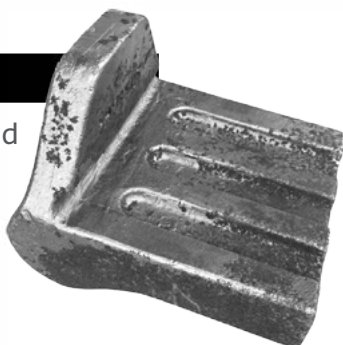


WEAR PROTECTION RANGE

A LARGE RANGE OF HIGH QUALITY, WEAR PROTECTION PRODUCTS ARE AVAILABLE TO PROTECT YOUR BUCKETS & BLADES FROM WEARING AWAY

HEEL SHROUDS

A range of weld-on and bolt-on Heel Shrouds available for 10-400 tonne size Buckets



Pg. 3

LIP PROTECTORS

Weld-on and pin-on Lip Protectors available for 10-400 tonne size Buckets



Pg. 20

WEAR STRIPS

Profile cut wear strips and bolt-on wear pads available for Bucket and Blade protection



Pg. 6

CHOCK BLOCKS

Hardened Chock Block wear strips available in Rectangle, Knife edge and circular Button shapes



Pg. 26

SIDE PROTECTORS

Weld-on and pin-on Side Protectors available for 10-400 tonne Bucket size



Pg. 9

BUCKET & BLADE LINERS

Rolled liner plates available to suit any size Bucket or Blade



Pg. 29

HEEL SHROUDS



WELD-ON HEEL SHROUDS



PROTECT YOUR BUCKETS WITH THESE WELD-ON HEEL SHROUDS. AVAILABLE FOR ALL TYPES OF EXCAVATOR BUCKETS, UP TO 400 TONNE SIZE

Fig.1



Fig.2



Fig.3

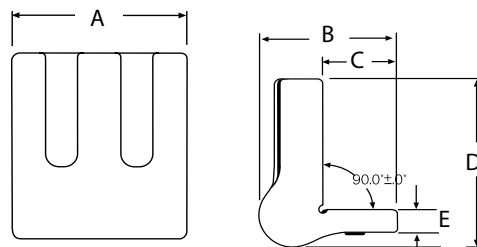


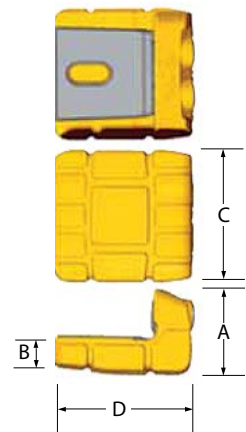
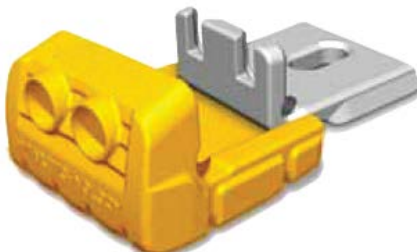
Fig	Part No	A	B	C	D	E	Machine Size	Kg
1	ES6697-4	190	102	70	178	25	10-20 Tonne	10
2	MM170BHS	165	145	82	185	25	20-100 Tonne	12
3	MM260BHS	250	160	120	230	45	100-200 Tonne	27
3	MM350BHS	350	180	135	240	50	200-400 Tonne	45

Dimensions in mm

BOLT-ON HEEL SHROUDS



GET FASTER CHANGE-OVER TIMES AND REDUCE DOWNTIME WITH THESE BOLT-ON HEEL SHROUDS. AVAILABLE FOR LARGE EXCAVATOR BUCKETS UP TO 400 TONNE SIZE

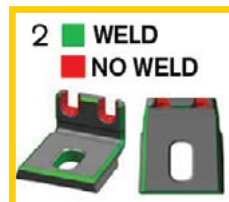
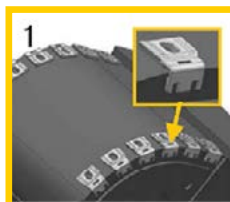


Part No	A	B	C	D	Machine Size	Kg
F89 HSQR	233	89	260	325	150-400 Tonne	62

More sizes available on request. Dimensions in mm

ASSEMBLY INSTRUCTIONS

1. Tack the base plates onto the bucket at even spaces
2. Fully weld base plates. Only weld the areas indicated
3. Insert the bolts and slide the heel shrouds on
4. Insert washers and tighten nuts to correct torque setting
5. Insert rubber caps
6. Ready to go



WEAR STRIPS & WEAR PADS



WELD-ON WEAR STRIPS



Less wear, for longer

ARMOR-UP YOUR BUCKETS & BLADES WITH PROFILE CUT WEAR STRIPS

- Wear Strips can be used inside and outside of Excavator & Loader buckets and on Dozer Blades
- Available in 450HB abrasion resistant steel or chromium carbide overlay plate. Profile cut to any length or width
- Thickness range available from 6mm - 50mm



BOLT-ON WEAR PADS

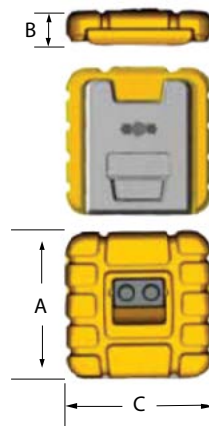


BOLT-ON WEAR PADS FOR THE UNDERSIDE OF BUCKETS, PROVIDING FASTER CHANGE-OVER TIMES WHEN REPLACING



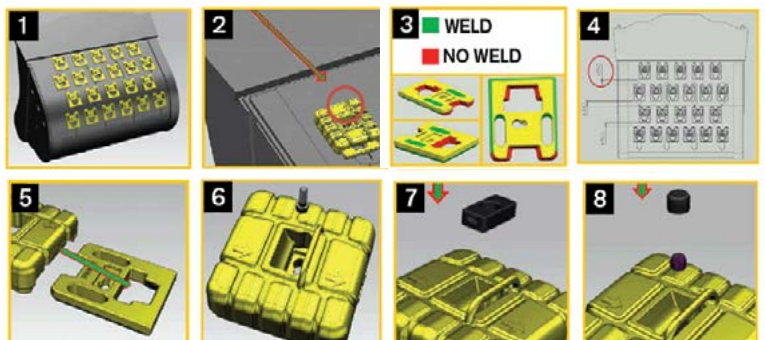
Part No	A	B	C	Machine Size	Kg
F49 WRRK	206	49	206	100-400 Tonne	12

More sizes available on request. Dimensions in mm



ASSEMBLY INSTRUCTIONS

1. Tack the base plates onto the bucket at even spacings
2. Position base plates so the arrows on the wear pad are facing towards the teeth/cutting edge when fitted
3. Fully weld base plates
4. Leave at least 50mm clearance between rows for assembly/disassembly of the wear pads
5. Slide the wear pads on to the Base
- 6-8. Insert bolts, block, tighten nuts to correct torque setting and fit rubber caps



SIDE PROTECTORS



PROMET SIDE PROTECTORS



Protect your Buckets from wear & tear

GET THESE HEAVY DUTY, HAMMERLESS SIDE PROTECTORS ON YOUR BUCKETS TO INCREASE CAPACITY, WEAR LIFE AND PRODUCTIVITY

■ **GUARANTEED SAFETY**

No more bang in pins with the MTG hammerless twist pin system

■ **LONGER WEAR LIFE**

Reversible fitment for the longest possible wear life

■ **NO MORE BROKEN PROTECTORS**

Heavy duty design for extra strength and impact resistance

■ **REDUCED DOWNTIME**

Faster on site change-overs with the pin-on design

■ **INCREASED CAPACITY**

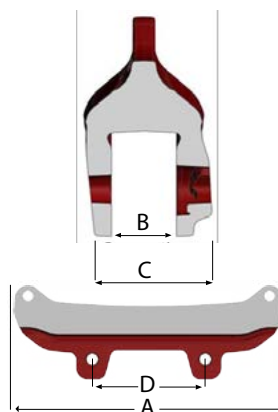
Get more material in your bucket and maximise production

**MTG is the world's most
trusted G.E.T system**

**Get a fully hammerless
wear package on your
bucket today!**

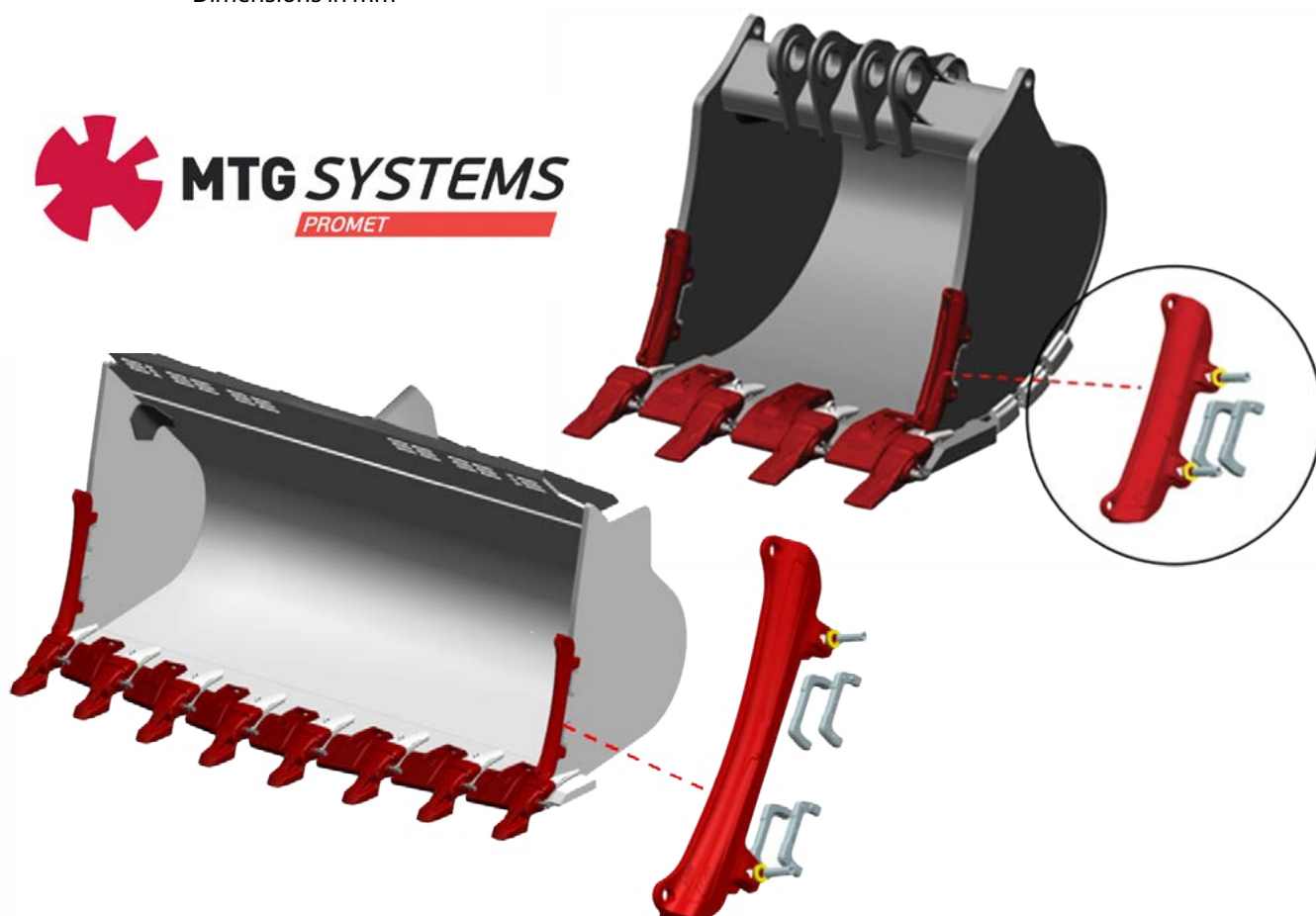
PROMET SIDE PROTECTORS

A RANGE OF PROMET PROTECTORS ARE AVAILABLE TO SUIT CONSTRUCTION SIZE EXCAVATOR AND LOADER BUCKETS WITH 30-50mm SIDE WALL THICKNESS



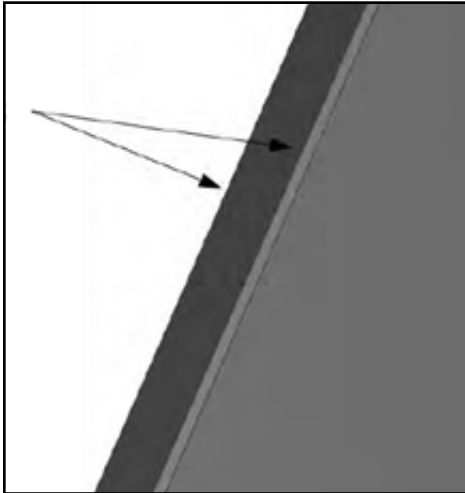
Part No	A	B	C	D	Kg
4MY30U480	480	34	90	250	17
4MY40U480	480	42	90	250	17
4MY50U600	600	53	115	250	33

Dimensions in mm

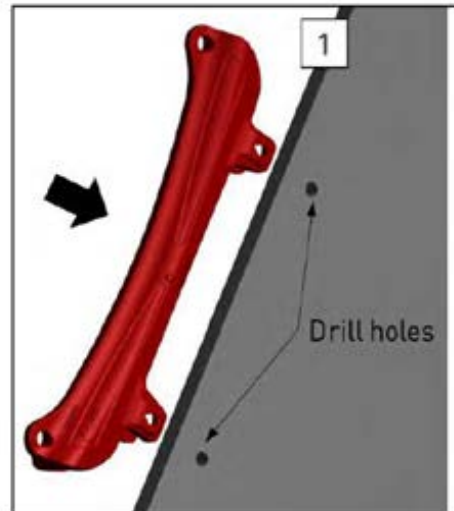


PROMET SIDE PROTECTORS

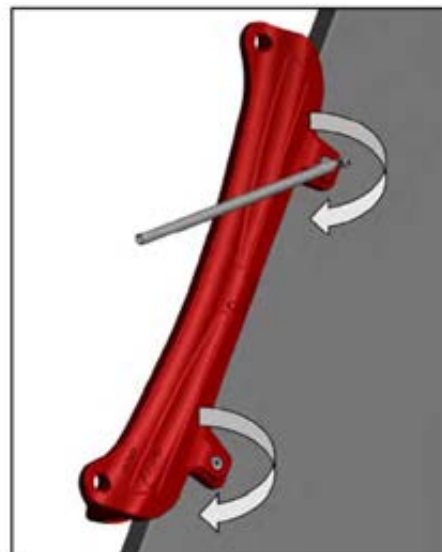
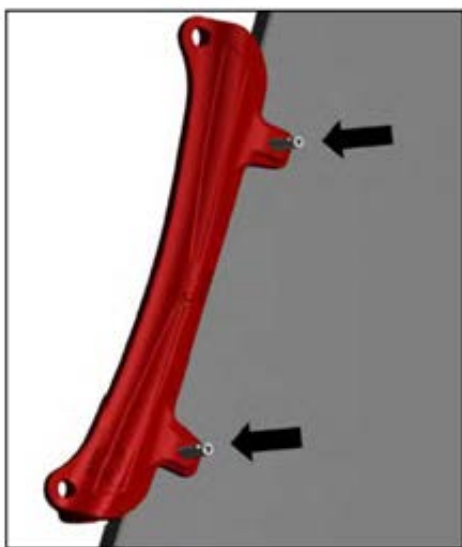
FITTING INSTRUCTIONS FOR CONSTRUCTION SIZE PROMET PROTECTORS



- 1.) Grind a 3mm x 3mm chamfer on both corners of the Bucket side, along the whole length of Protector



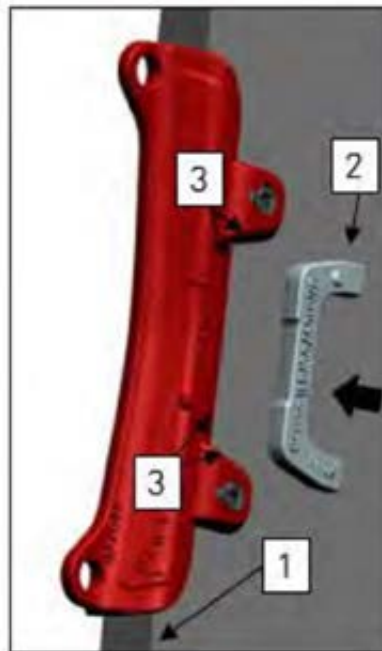
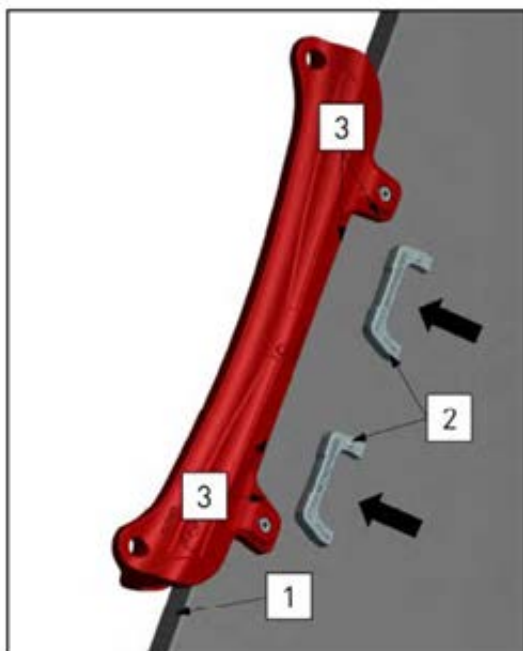
- 2.) Place Protector on the Bucket side wall, 5-10mm above the top of the adapter. Ensure Protector is hard against the front of Bucket side (1) and mark the hole centers. Drill holes at 28mm diameter +/- 1mm



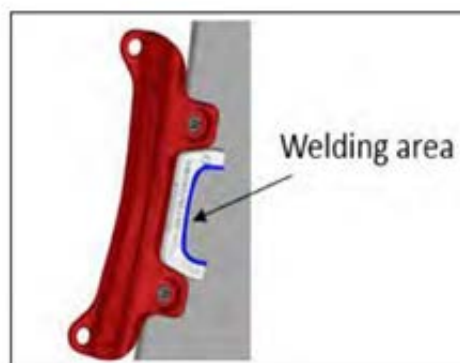
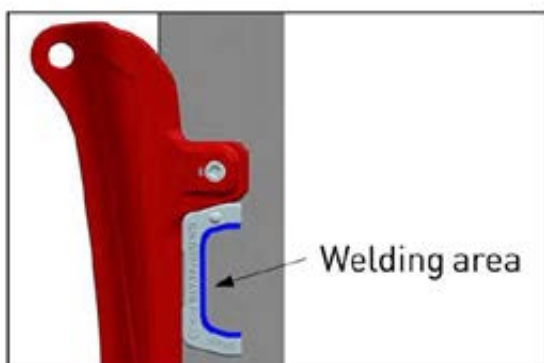
- 3.) After drilling the holes, insert both pins and turn clockwise until they stop

PROMET SIDE PROTECTORS

FITTING INSTRUCTIONS FOR CONSTRUCTION SIZE PROMET PROTECTORS CONT...



- 4.) Pre-heat the Bucket side to the recommended temperatures and position the weld-on bases (2), until they come into contact with the legs of the Protector (3). Make several tack welds on the back of each base



- 5.) Proceed with the welding of each weld-on base at the designated welding area
- 6.) After completing the welding process, remove the Protector and place the sponge retainers into the internal recess. The hard side of the retainer must be facing the shroud
- 7.) Fit onto Bucket side, insert both pins and turn clockwise until they stop

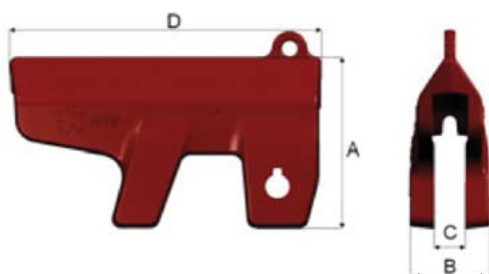
Ready to go!



PROMET SIDE PROTECTORS - MINING



HEAVY DUTY, PIN-ON SIDE PROTECTORS FOR LARGE MINING BUCKETS, WITH MAXIMUM WEAR PROTECTION AND SAFETY WITH HAMMERLESS PIN TECHNOLOGY



- **GUARANTEED SAFETY**
 Hammerless Pin system for greater safety when fitting and removing
- **REDUCED MACHINE DOWNTIME**
 Faster and easier to change over in the field resulting in less downtime
- **LONGER WEAR LIFE**
 Heavy duty design with maximum wear material for the longest possible wear life
- **INCREASED CAPACITY**
 Get more material in your Bucket and maximise production

Part No	A	B	C	D	Kg
4MXB60-A	343	159	61	626	100
4MX90LS	343	189	91	626	129

Dimensions in mm

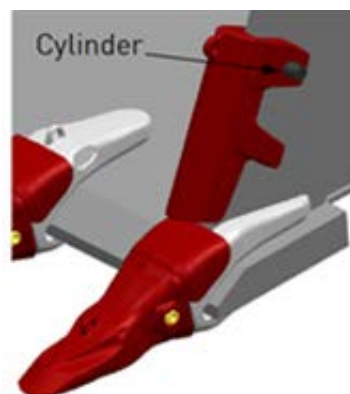


PROMET SIDE PROTECTORS - MINING

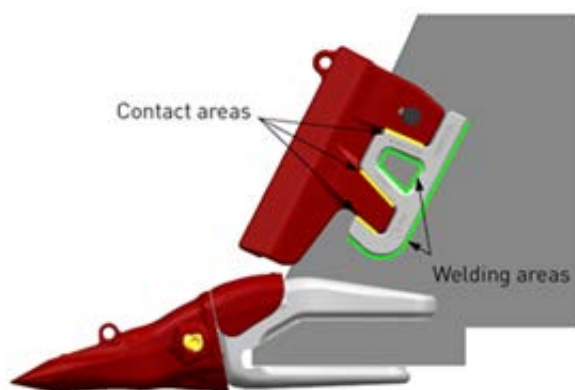
FITTING INSTRUCTIONS FOR MINING SIZE PROMET PROTECTORS



- 1.) Place the Protector on the Bucket side wall, 5-10 mm above the adapter. Ensure Protector is hard against the front of Bucket side and mark the hole center



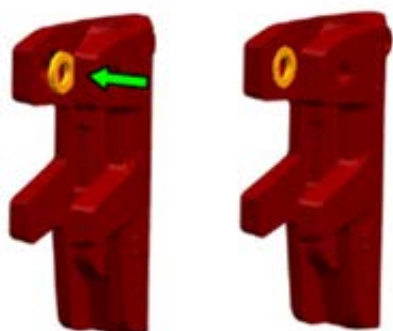
- 2.) Remove Protector and drill the hole at 50mm diameter +/- 1mm. Fit Protector, insert the pin and turn clockwise



- 3.) Place the weld-on base into position, ensuring contact at the areas shown. Pre heat Bucket side and tack base plate in place. Repeat on other side.



- 4.) Remove Protector and fully weld the base plates on both sides, only welding at the areas shown



- 5.) Fit the sponge retainers inside the Protectors. The hard side of the retainer must be facing the Protector. Fit onto Bucket, insert pin and turn clockwise until it stops. Ready to go!

SIDE PROTECTORS - HENSLEY STYLE



INCREASE YOUR BUCKET CAPACITY AND REDUCE WEAR WITH THESE PIN-ON SIDE PROTECTORS. AVAILABLE TO SUIT CONSTRUCTION SIZE EXCAVATOR & LOADER BUCKETS



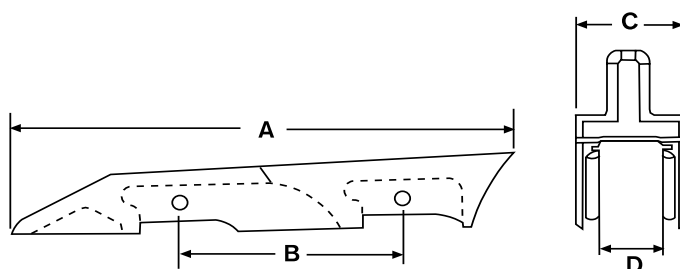
Protector



Weld-on Mount



Pin & Retainer



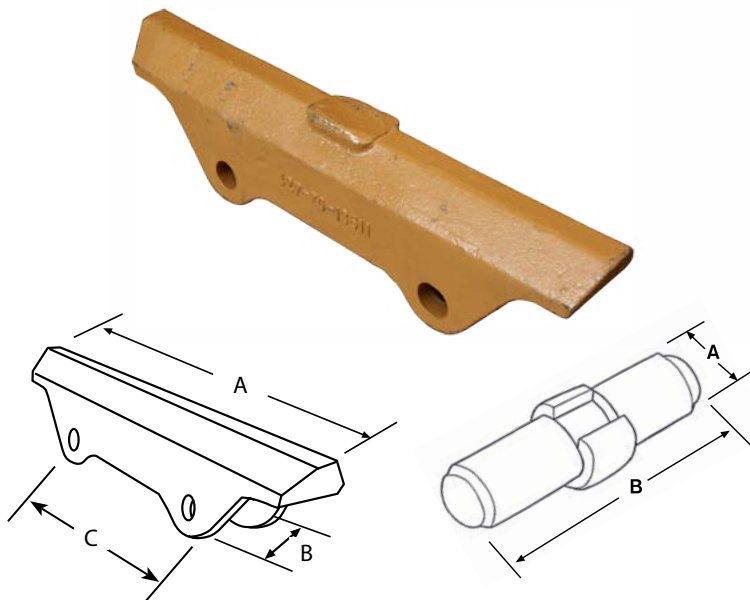
Part No	Item	Pin No.	Retainer No.	A	B	C	D
HENV5450	Protector	HENVSP2-SL	HENVSR3-SL	770	343	-	-
HENV5500	Protector	HENVSP3-SL	HENVSR3-SL	840	406	-	-
HENVSM100	Mount	-	-	-	-	87	25
HENVSM150	Mount	-	-	-	-	87	44
HENVSM200	Mount	-	-	-	-	87	54

Dimensions in mm

SIDE PROTECTORS - KOMATSU STYLE



PIN-ON KOMATSU STYLE SIDE PROTECTORS FOR LARGER EXCAVATOR BUCKETS & CAN ALSO BE USED ON DOZER BLADE SIDES AS WEAR PROTECTION



Part No	Item	A	B	C
427-70-13611	Protector	655	50	300
195-78-71360	Pin Assembly	30	112	-

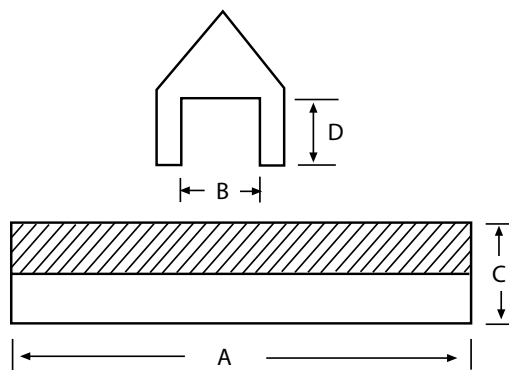
Dimensions in mm



WELD-ON SIDE PROTECTORS - SLS



A LIGHT-WEIGHT, WELD-ON SIDE PROTECTOR FOR LOW WEAR APPLICATIONS. MULTIPLE PROTECTORS CAN BE USED UP THE BUCKET SIDE. ARROW SHAPED FOR MAXIMUM PENETRATION



Part No	A	B	C	D
SLS20	300	21	47	25
SLS25	300	26	52	27
SLS32	300	33	70	37
SLS40	300	41	80	42

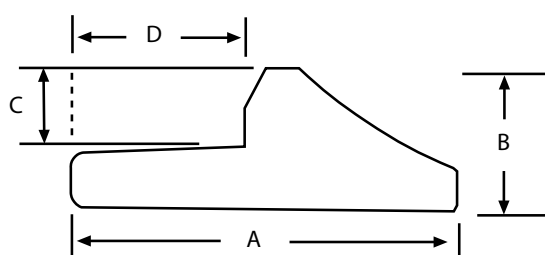
Dimensions in mm



SIDE PROTECTORS - HALF ARROW

HALF ARROW SHAPE, WELD-ON SIDE PROTECTORS FOR EXCAVATOR & LOADER BUCKETS

- Multiple Protectors can be used up the Bucket sides
- Half arrow shaped for good penetration
- Increased Bucket capacity
- Can also be used for lip protectors between bucket teeth



Part No	A	B	C	D	Length
6530103	85	28	15	35	150
6530153	130	44	25	60	265
6530173	160	54	30	75	300

Dimensions in mm



LIP PROTECTORS



PROMET LIP PROTECTORS



MAXIMISE YOUR BUCKET EDGE PROTECTION WITH THE MOST RELIABLE AND LONGEST LASTING PIN-ON LIP PROTECTORS. AVAILABLE FOR LARGE EXCAVATOR & LOADER BUCKETS

- **Hammerless pin technology for the best retention and faster, safer change-overs**
- **The design of ProMet Lip Protectors have been optimized for use on Excavators or Loaders and offer up to 30% more wear material compared to the equivalent model of our competitors**
- **Lip Protectors reduce the exposure of the bucket edge to impacts and abrasions, increasing the useful life of the bucket**
- **The locking system only requires one weld-on base for each Protector, making installation quick and easy**

Loader Protector



Hammerless MTGtwist locking System, with one weld-on base



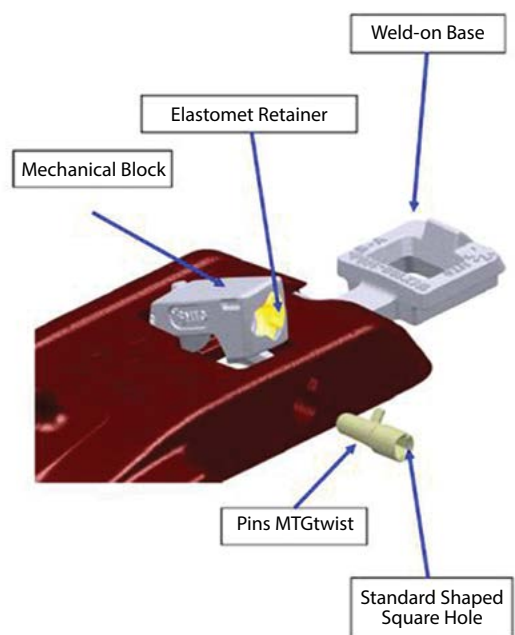
Excavator Protector



Hammerless MTGtwist locking System, with one weld-on base



PROMET LIP PROTECTORS

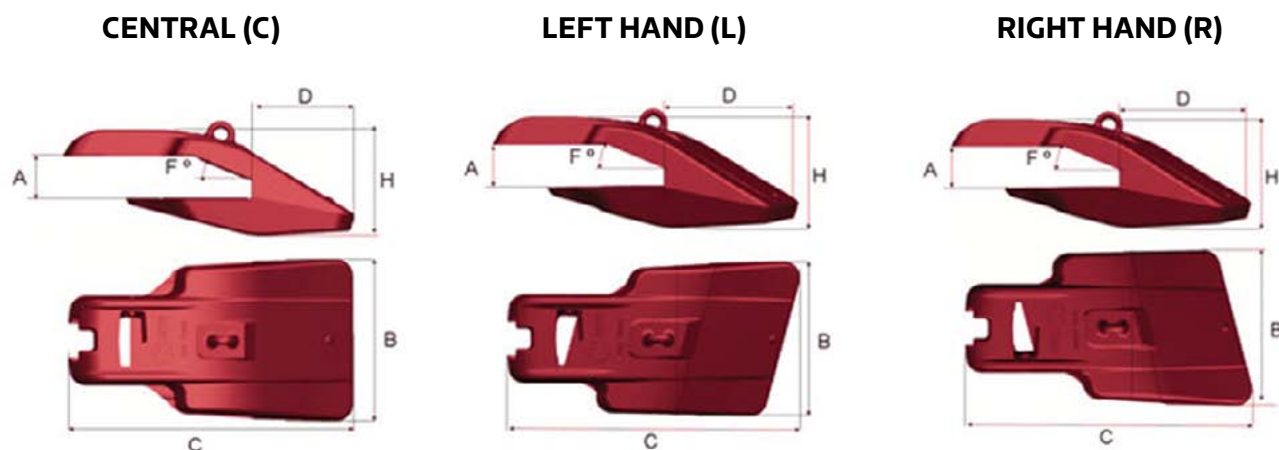


- Easy installation
- Faster and safer change-overs
- Reduced machine downtime
- Extended Bucket life
- Increased Bucket capacity and penetration
- Hammerless twist pin technology



PROMET LIP PROTECTORS

SPECIFICATIONS OF PROMET LIP PROTECTORS

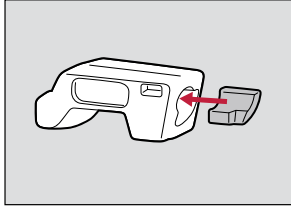


Lip Size	Part No.	A	B	C	D	H	F	KG
70mm	4MXL70C450-A	72	450	498	151	198	30	100
	4MXL70L450-10A	72	450	498	151	198	30	100
	4MXL70R450-10A	72	450	498	151	198	30	100
80mm	4MX80C235-A	82	235	484	120	177	30	53
	4MX80L235-14A	82	235	484	120	177	30	53
	4MX80R235-14A	82	235	484	120	177	30	53
	4MX80C300-A	82	300	484	120	177	30	65
	4MX80L300-14A	82	300	484	120	177	30	65
	4MX80R300-14A	82	300	484	120	177	30	65
100mm	4MX100C290-A	102	290	568	135	222	30	85
	4MX100LD290-15A	102	290	568	135	222	30	85
	4MX100RD290-15A	102	290	568	135	222	30	85
	4MX100C410-A	102	410	568	135	222	30	103
	4MX100L410-15A	102	410	568	135	222	30	103
	4MX100R410-15A	102	410	568	135	222	30	103
120mm	4MX120C410	122	410	618	157	251	30	128
	4MX120L410-15A	122	410	618	157	251	30	128
	4MX120R410-15A	122	410	618	157	251	30	128
	4MX120C440-A	122	440	618	157	251	30	135
	4MX120L440-11A	122	440	618	157	251	30	135
	4MX120R440-11A	122	440	618	157	251	30	135
140mm	4MX140C465-A	142	465	701	175	270	30	180
	4MX140L465-11A	142	465	701	175	270	30	180
	4MX140R465-11A	142	465	701	175	270	30	180

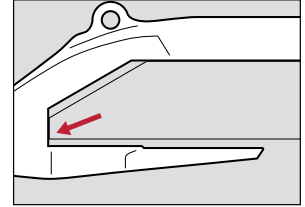
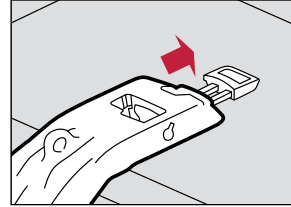
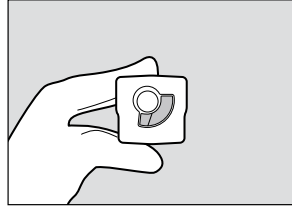
Dimensions in mm

PROMET LIP PROTECTORS

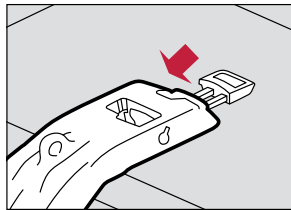
FITTING INSTRUCTIONS FOR PROMET LIP PROTECTORS



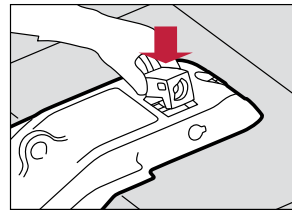
1.) Place the retainer into block.



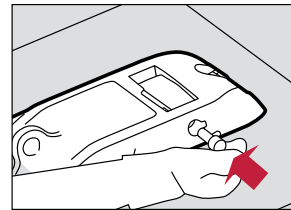
2.) Place the protector on the edge in the desired position. The protector must be in contact with the front of the edge.



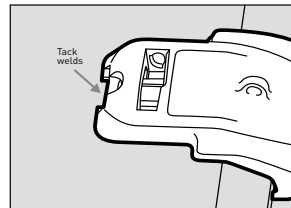
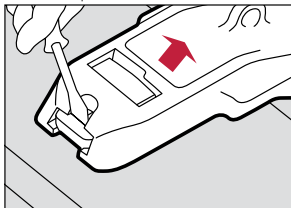
3.) Place the weld on base on top of the edge and push it into the protector.



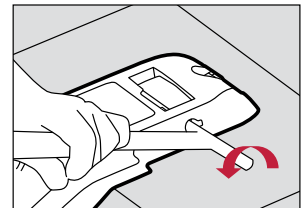
4.) Place the block with retainer into the recess of the lip protector



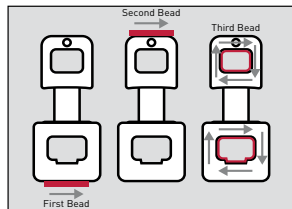
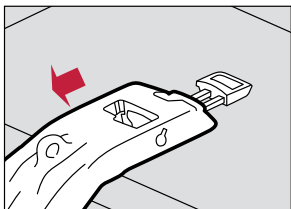
7.) Keeping the frontal contact all the time. Push the base towards the back of the bucket using a screwdriver. Pre heat the base material to recommended temperatures and follow the requirements of General Welding Instructions.



8.) Make several tack welds on the back of the base.

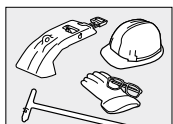


10.) Remove the protector and re-establish the recommended preheat temperatures if necessary.

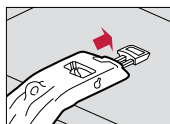


12.) Be sure that the entire bottom of the weld base maintains contact with the edge during the entire weld process.

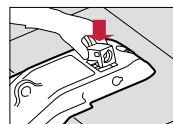
Assembly Instructions



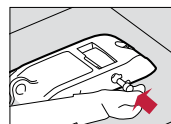
Recommended equipment.



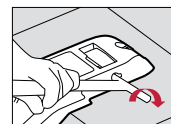
Place the protector on the edge.



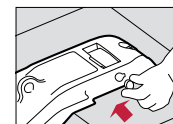
Insert retainer into mechanical block and place in position.



Insert the pin.

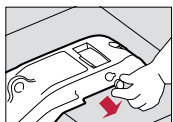


Turn the pin clockwise.

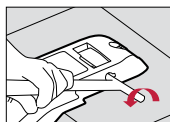


Fit the plug in end of pin.

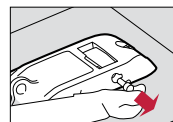
Disassembly Instructions



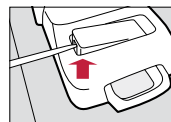
Remove the plug..



Turn the pin anticlockwise.



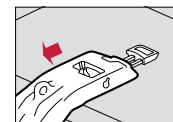
Remove the pin.



Remove the mechanical block.



Push protector away from the mount.



Remove protector.

WELD-ON LIP PROTECTORS



PROTECT YOUR BUCKET EDGE FROM WEAR AND TEAR WITH THESE WELD-ON LIP PROTECTORS. AVAILABLE TO SUIT MOST EDGE THICKNESSES AND CAN BE CUT TO ANY WIDTH



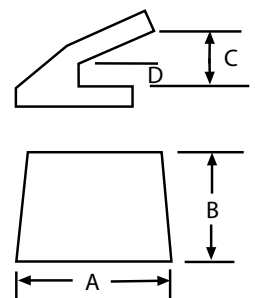
Fig. 1



Fig. 2

Fig	Part No	A	B	C	D	Edge Size
1	WE5966	800	180	130	25	50-80
1	WE6027	800	250	150	40	100-120
2	WS45	115	182	53	10	30-50
2	WS80	203	218	70	10	50-75

Dimensions in mm



CHOCK BLOCK WEAR STRIPS



CHOCK BLOCK WEAR STRIPS



Chock up your wear protection

**CHOCK BLOCK IS A QUICK AND EASY WAY TO ARMOR-UP YOUR BUCKETS.
AVAILABLE IN VARIOUS SHAPES & SIZES TO SUIT DIFFERENT APPLICATIONS**

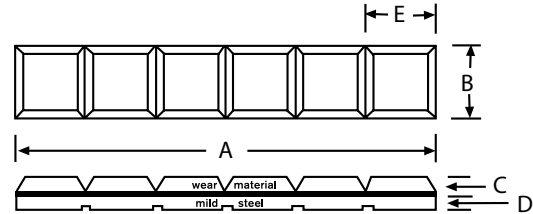
- Chock Block is a combination of extremely hard alloy casting, bonded to a mild steel backing in the form of laminate
- This has an extreme hardness of 700HB which is a perfect solution for high wear areas where there are continuous abrasive effects from material flow and impact
- Chock Blocks are suitable for all types of bucket protection and applications including side styles, side cutters, lip protectors, adapter caps, cutting edge ends, bucket sides and on the leading edge of ripper shanks



CHOCK BLOCK WEAR STRIPS

SHAPE AND SIZE RANGE OF CHOCK BLOCKS

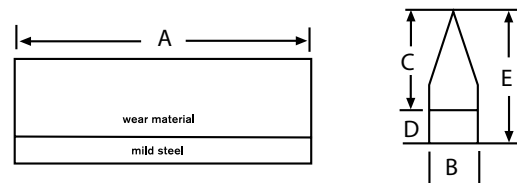
Strips



Part No	A	B	C	D	E
CB25	240	25	15	8	40
CB40	240	40	15	8	40
CB50	240	50	15	8	40
CB65	240	60	15	8	40
CB100	240	100	15	8	40
CB150	240	150	15	8	40

Dimensions in mm

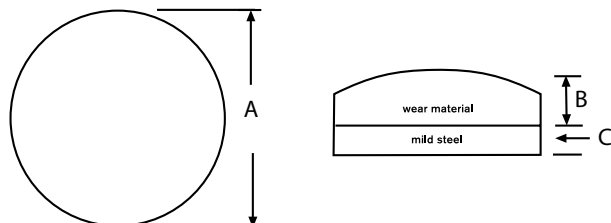
Knife Edge



Part No	A	B	C	D	E
E1301	305	19	35	12	47
E1302	305	25	35	12	47

Dimensions in mm

Circular Button



Part No	A	B	C
BT60C	60	20	11
BT75C	75	15	12
BT90C	90	21	12

Dimensions in mm

BUCKET & BLADE LINERS



BUCKET & BLADE LINERS

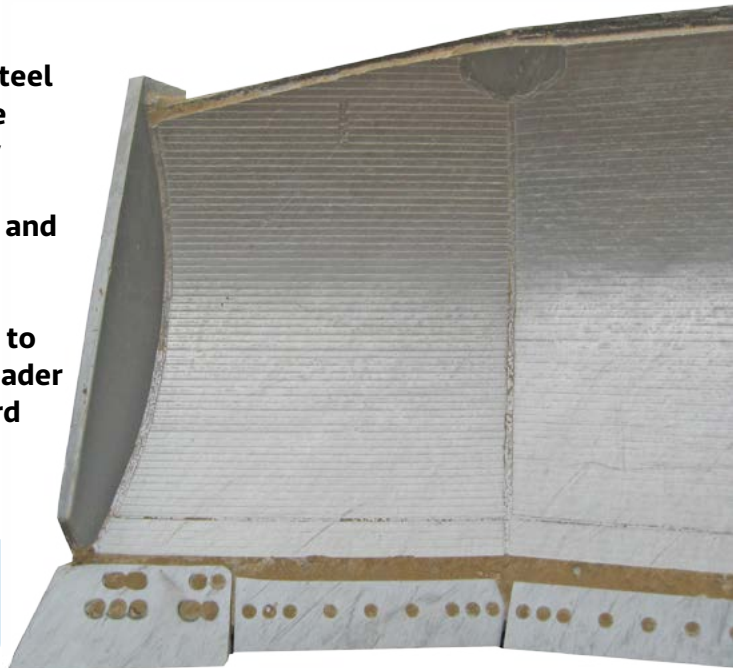


Long lasting Liners

MAKE YOUR BUCKETS & BLADES LAST LONGER BY USING LINER PLATES TO PROTECT THE STRUCTURAL MATERIAL FROM WEARING AWAY

- Available in 450HB Abrasion Resistant steel or Chromium Carbide Overlay plate. The Chromium Carbide plate retains a highly polished surface which is important for avoiding cross contamination of gravels and reducing material hang up
- Liner plates can be profile cut and rolled to suit the curve of any size Excavator & Loader Bucket, Dozer Blade or Grader Moldboard

We use the hardest & toughest wear plate that survives the most extreme wear conditions



BUCKET & BLADE LINERS



EXAMPLES OF LINER PLATE APPLICATIONS

2015-04-08
WEST-TRAK-28032
PO NO. 05060000
NEI SON 450
ABREX 400S
12x25 KG
1413
460205202

MADE IN JAPAN
-5230520 2-53



G450, 12mm rolled Loader Bucket Liner plate



D10 Dozer blade with G45 Liner plates



992 Loader Bucket with a fully hammerless GET wear package



***Delivering the
solutions you
need to stay
productive***

CALL US TODAY FOR A COMPLETE WEAR PROTECTION PACKAGE

Machine names and part numbers are for reference only.

All parts are high-quality replacement parts and are not produced by the original equipment manufacturers.

Contact us:



Phone us on
0800 654 323



Fax us on
03 789 8093



Email us on
sales@west-trak.co.nz



Visit our Website
west-trak.co.nz



Our Address is
PO Box 164, Westport 7866

AUCKLAND • TAURANGA • WESTPORT • CHRISTCHURCH